

JANUARY 2005

- January 9-13 American Meteorological Society. **AMS Forum: Living with a Limited Water Supply**. San Diego, CA. www.ametsoc.org
- January 14-17 National Ground Water Association. **2004 Theis Conference: Environmental Decision Making: Restoration versus Risk Reduction**. Sedona, AZ. www.ngwa.org/pdf/e/conf/0501145100agenda.pdf
- January 23-26 American Academy of Sciences. **1st International Conference on Environmental Science and Technology**. New Orleans, LA. www.aasci.org/conference
- January 25-28 Texas Groundwater Association. **TGWA Annual Convention and Trade Show**. Lubbock, TX. Phone 512-472-7437.
- January 27-28 CLE International. **Law of the Rio Grande SuperConference**. Albuquerque, NM. www.cle.com/upcoming/list_month.shtml#January%202005
- January 27-28 CLE International. **Texas Wetlands**. Houston, TX. www.cle.com/upcoming/list_month.shtml#January%202005

FEBRUARY 2005

- February 1-3 Nevada Water Resources Association. **Annual Conference: Growth, Water, and the Quality of Life in Nevada**. Reno, NV. www.nvwra.org/news.asp
- February 14-15 American Water Resources Association. **National Water Resources Policy Dialogue**. Phoenix, AZ. www.awra.org/meetings/Tucson2005/index.html
- February 14-18 Applied Technology Institute. **Remote Sensing for Earth Science Applications**. Beltsville, MD. www.atcourses.com/remote_sensing_earth.htm
- Feb. 28-March 4 Princeton Groundwater Inc. **The Groundwater Pollution and Hydrology Course**. San Francisco, CA. www.princeton-groundwater.com

MARCH 2005

- March 7-8 CLE International. **Colorado Water Law**. Denver, CO. www.cle.com
- March 10-11 Government Institutes. **Environmental Site Assessments**. Las Vegas, NV. www.govinst.com
- March 13-18 University of Arizona. **Colorado River Field Studies**. Colorado River from Las Vegas to Yuma (via roads). Contact Richard H. Hawkins at 520-621-7273 or rhwkins@ag.arizona.edu.
- March 14-18 Princeton Groundwater Inc. **The Remediation Course**. Denver, CO. www.princeton-groundwater.com
- March 16-18 University of Arizona Department of Hydrology and Water Resources. **Applied Stochastic Subsurface Hydrogeology and Environmental Geophysics**. Tucson, AZ. tian.hwr.arizona.edu/yeh/short_course.html

APRIL 2005

- April 3-7 Environmental and Engineering Geophysical Society. **Symposium on the Application of Geophysics to Engineering and Environmental Problems**. Atlanta, GA. www.eegs.org/sageep/index.html
- April 6 University of Arizona Water Resources Research Center. **Annual Conference: Water and the Environment**. Tucson, AZ. ag.arizona.edu/AZWATER
- April 11-12 CLE International. **California Water Law and Policy**. San Francisco, CA. www.cle.com.
- April 17-20 National Ground Water Association. **2005 Ground Water Summit**. San Antonio, TX. www.ngwa.org/e/conf/0504175095.shtml
- April 17-21 Mine Waste Technology Program at Montana Tech. **Mine Design, Operations & Closure Conference '05**. Polson, MT. multimedia.mtech.edu/mineop
- April 25-27 University of California Center for Water Resources. **International Salinity Forum – Managing Saline Soils and Water: Science, Technology, and Social Issues**. Riverside, CA. www.waterresources.ucr.edu/index.php?content=news_events/intlsf_meeting/SF05pageDW.htm
- April 25-28 Government Institutes. **Clean Water Compliance Institute**. Phoenix, AZ. www.govinst.com

MAY 2005

- May 2-6 Government Institutes. **U.S. Environmental Laws and Regulations (May 2-4), Advanced Environmental Laws and Regulations (May 5-6)**. Phoenix, AZ. www.govinst.com
- May 9-13 Government Institutes. **Environmental Compliance Bootcamp**. Phoenix, AZ. www.govinst.com
- May 15-19 Environmental and Water Resources Institute of ASCE. **World Water & Environmental Congress**. Anchorage, AK. www.asce.org/conferences/ewri2005/index.cfm
- May 26-27 National Ground Water Association. **MTBE and Perchlorate Conference**. San Francisco, CA. www.ngwa.org/e/index.shtml



Would you let your dentist use this on you?

Albuquerque

Bozeman

Elko

Las Vegas

Los Angeles

Minneapolis

Houston

Phoenix

Sacramento

www.wdcexploration.com

Right drill, right driller.



New Rig Advantage

Sonic • Air Rotary Casing Hammer • Air Rotary • Mud Rotary • STRATEX® / ODEX®
Large Diameter Flooded Reverse Circulation • Dual Tube Reverse Circulation • Hollow Stem Auger
Wireline Coring • Well Development & Abandonment • Vac Truck / Air Knife

The Geochemist's Workbench®

H₂O Ag⁺⁺⁺ As(OH)₄⁻ Au⁺ B(OH)₃ Ba⁺⁺⁺ Br⁻ Ca⁺⁺ HCO₃⁻ Cs⁺ Cl⁻ Co⁺⁺ Cr⁺⁺⁺ Cu⁺ Eu⁺⁺⁺ F⁻

New!

Version 5.0
Windows 2000/XP

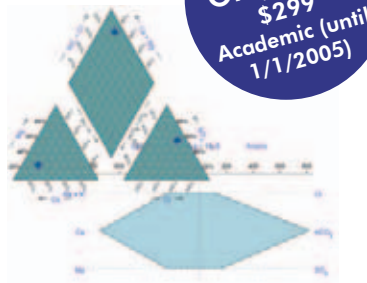
Now available in 3 packages, priced according to your needs:

GWB Essentials 5.0

AQ01392 Academic single license \$299 (until 1/1/2005)
AQ01410 Commercial single license \$599 (until 1/1/2005)

The essential set of tools that every aqueous geochemist should own:

- balance chemical reactions
- create redox-pH and activity diagrams
- calculate solution speciation, mineral saturation, gas fugacities and more
- model ion sorption and surface complexation
- plot Piper, Stiff and other aqueous geochemistry diagrams
- Debye-Hückel or Pitzer activity coefficients



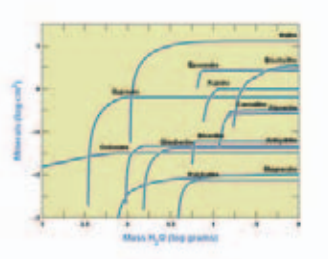
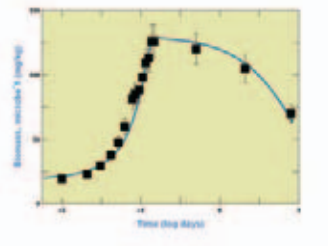
GWB Essentials
Only \$599
\$299
Academic (until 1/1/2005)

GWB 5.0

AQ00434 Academic single license \$1599
AQ00425 Commercial single license \$2999

The original! Contains all the tools of GWB Essentials, and adds powerful reaction modeling capabilities:

- polythermal and sliding fugacity reactions
- consider mineral dissolution/precipitation kinetics and redox kinetics
- specify custom rate laws
- model microbial metabolism and growth
- flow-through and flush configurations
- flash (scaling) diagrams
- stable isotope fractionation

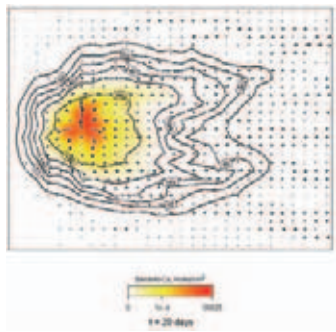


GWB Professional 5.0

AQ00453 Academic single license \$4999
AQ01482 Commercial single license \$7999

Contains all the tools of GWB (standard), and adds 1D and 2D reactive transport modeling:

- transport by advection, diffusion and dispersion
- fixed and evolving flow rates and patterns
- saturated and unsaturated flow
- permeability constant or varying
- injection and production wells
- heterogeneous domains, initial conditions
- polythermal flow and reaction
- To be released 2005.



For information about obtaining a pre-release distribution, contact Tom Meuzelaar at 303 278 3534 x104 or gwb@rockware.com

New Features in Version 5.0

- 2 new modules! SpecE8 calculates species distributions, mineral saturation, gas fugacities and more. Aqplot plots SpecE8 results in a variety of diagram types.
- New ways to display your results: cross plots, ternary diagrams, Piper diagrams, Durov plots, Stiff diagrams, radial plots, ion balance and pie charts.
- Use the PhreeqC, Minteq and Wateq activity coefficient models and databases.
- Use control scripts as input files.
- Use alkalinity as input constraint; computed carbonate alkalinity is reported in output files, and is available for plotting.
- Calculate and report distribution coefficients (K_d values) for surface complexation models; K_d values are available for plotting.
- Remote control (*Professional version only*) - run GWB modules as slave processes from another program.
- 1D and 2D reactive transport (*Professional version only*).

Industry • Government
Consulting • Academic
Classroom

 **RockWare®**
Earth Science and GIS Software

2221 East Street, Suite 101 • Golden, CO, USA 80401
www.RockWare.com • Fax 303-278-4099

303-278-3534 x104

The Geochemist's Workbench® is a registered trademark of the University of Illinois.