

# Climate Tools for Water Managers

**Mike Crimmins** – University of Arizona. This department is provided by the Institute for the Environment and Society at the University of Arizona. Visit [www.ispe.arizona.edu](http://www.ispe.arizona.edu).

## Tracking Precipitation Across the Nation

**Source:** National Weather Service

**Access:** [water.weather.gov](http://water.weather.gov)

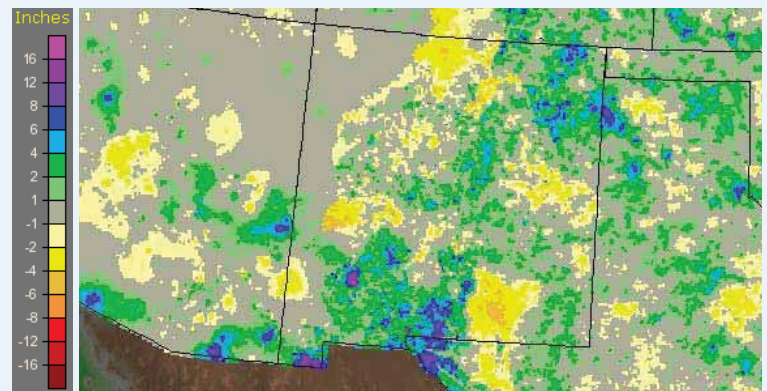
The National Weather Service (NWS) has developed a new web tool to track precipitation amounts at various timescales across the United States. The tool displays daily precipitation values on a four-by-four kilometer grid estimated from multiple sensors including NEXRAD radar, surface rain gauges, and satellite precipitation estimates. The gridded national dataset is produced by combining precipitation estimates produced regionally at twelve NWS River Forecast Centers across the United States. In the mountainous West, where radar and rain gauge

coverage are limited, an additional step of interpolation and comparison to historical data is also incorporated to improve precipitation estimates.

The web tool allows users to view a national composite map or to zoom into regions, states, and county-level areas over multiple time periods, including for the previous day and precipitation totals over the last 7, 14, 30, or 60 days. Archived data are available back to 2005 with monthly estimates of departure from normal and percent of normal precipitation. Raw data files can also be downloaded for research purposes.

Continuous, national-scale precipitation estimates available through this web tool can assist in tracking hydroclimatic events like floods and drought over large areas. NWS welcomes your suggestions and comments to continue improving and enhancing the web tool.

Visit [water.weather.gov](http://water.weather.gov).



Departure from normal of 60-day precipitation over New Mexico and the surrounding area on Sept. 9, 2008. Some areas received up to 16 inches more than normal during the 2008 monsoon season.



**HARGIS + ASSOCIATES, INC.**  
HYDROGEOLOGY • ENGINEERING

Finding, Developing, Distributing and Managing Water Resources



Working to protect our most precious resource

[www.hargis.com](http://www.hargis.com)

1-800-554-2744

SAN DIEGO, CA

TUCSON, AZ

MESA, AZ

[www.caslab.com](http://www.caslab.com)



Trusted technical expertise.

Columbia Analytical is an employee-owned, full-service environmental analytical network with laboratories and service centers nationwide. Columbia Analytical features over 125,000 combined square feet of facilities.

### Testing services offered in SW Region:

- Air
- Ground Water
- Drinking Water
- Stormwater
- Wastewater
- Hazardous Waste
- Mobile Laboratories
- Elemental Analyses

We have earned our reputation as the most responsive, high quality, and cost-effective laboratory, tailoring each project to meet the client's data quality objectives.

Visit our website or call  
**800.927.5183**

Our Project Chemists are available to assist you in setting up a project that will make your company successful.

**Columbia Analytical Services**

[www.caslab.com](http://www.caslab.com)