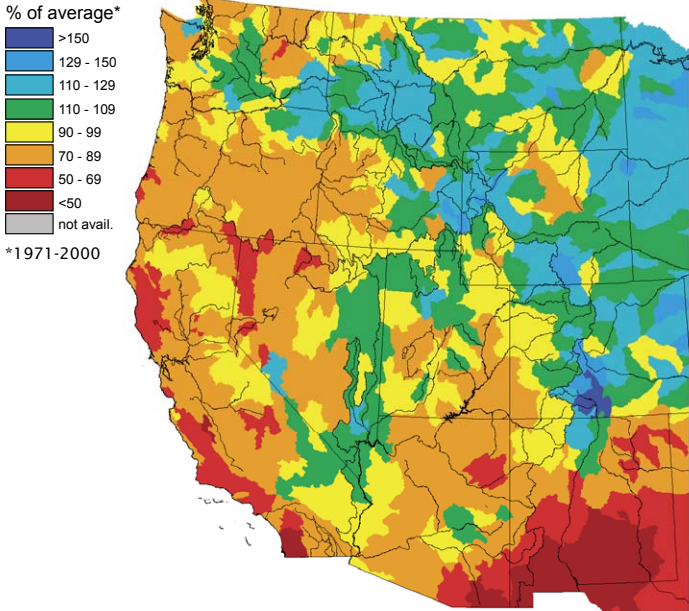
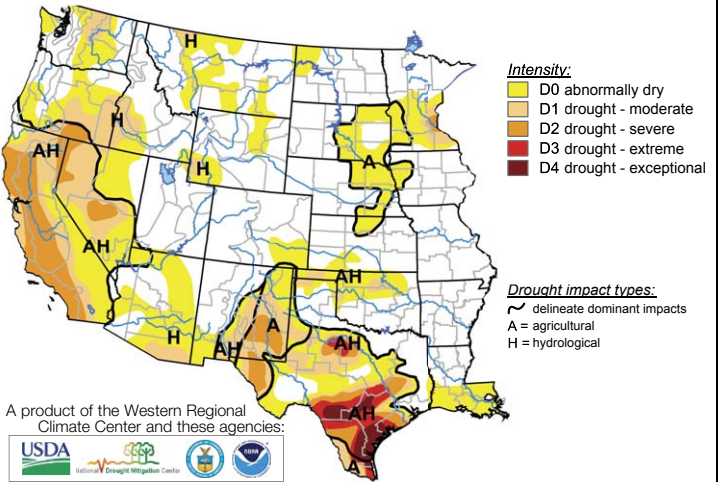


Seasonal Precipitation, Oct. 2008 - May 2009



Prepared by NOAA, National Weather Service, Colorado Basin River Forecast Center
www.cbrf.noaa.gov

Drought Monitoring, as of June 9, 2009



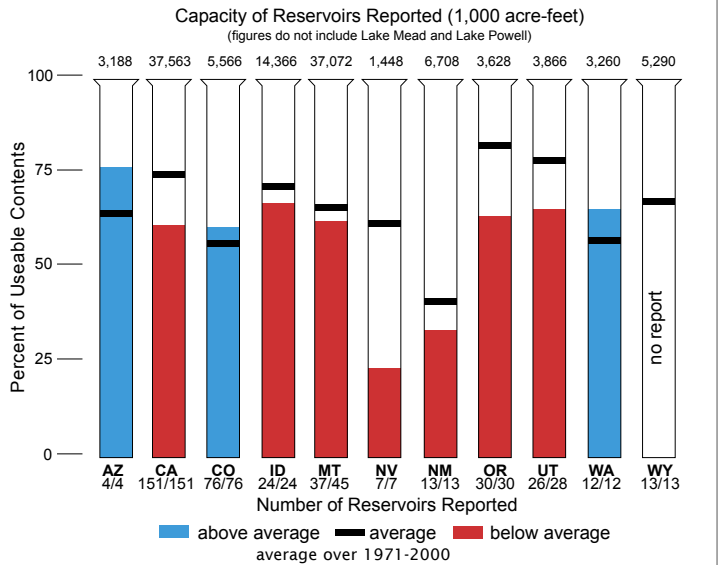
A product of the Western Regional Climate Center and these agencies:



http://drought.unl.edu/dm

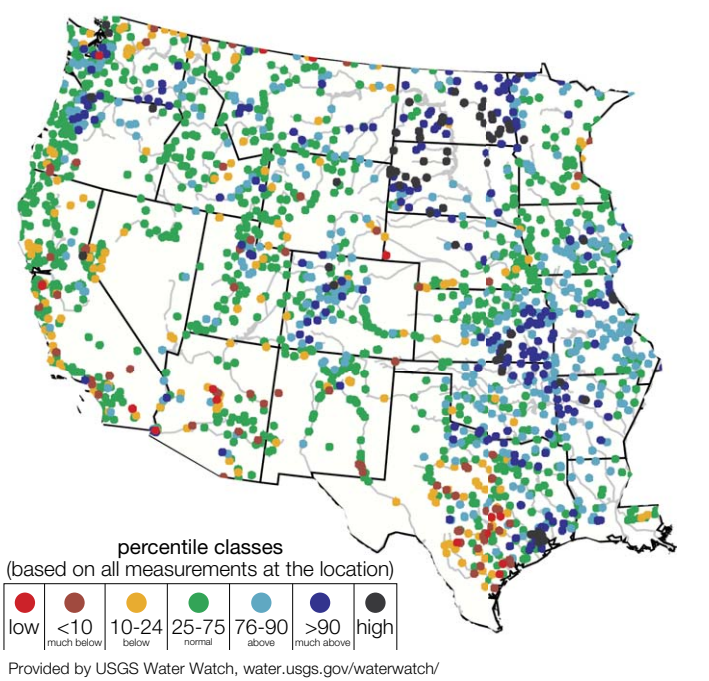
Prepared by Brian Fuchs, National Drought Mitigation Center.

Reservoir Storage as of May 1, 2009



Prepared by USDA, National Resources Conservation Service, National Water and Climate Center
www.wcc.nrcs.usda.gov

28-day streamflow average, as of June 11, 2009



Southwest Weather

Sierra snowpack was 66% of normal in the final (late April) survey of the season, down from 72% last year.

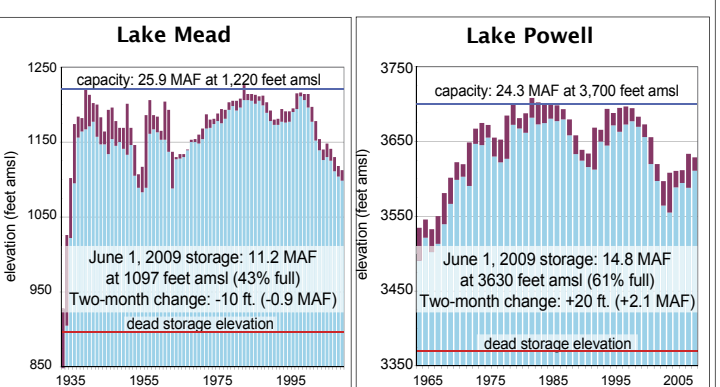
In June, 91% of Nevada and 97% of California were classified as under drought conditions.

Texas drought conditions had eased somewhat by early June, when 29% of the state was without any drought status, yet 24% remained under extreme or exceptional drought.

The 2009 monsoon forecast calls for an early onset and wet June and July.

Tornadoes hit Colorado, Texas, and Wyoming in early June.

Colorado River Reservoir Storage



MAF = million acre-feet; amsl = above mean sea level.
Vertical red bars indicate elevation range for the year.

Data source: U.S. Bureau of Reclamation, www.usbr.gov/main/water